

Ice Water Installation

Falling Film:

Brand: Omega
Refrigerant: NH3/Ammonia
Capacity: 900 kW
Number of plates: 20
Material: RVS 304
Water temp. in: +4°C
Water temp. out: +1°C
Pieces: 1

Reciprocating Compressor Unit:

Brand: Grasso
Type: RC 312E
Refrigerant: NH3/Ammonia
Capacity p/c: 300 kW (1000 RPM) / 450 kW (1500 RPM) at -3°C/+35°C
Total capacity: 600 kW (1000 RPM) / 900 kW (1500 RPM) at -3°C/+35°C
Electromotors: 2x 110 kW at 1475 RPM
Including:

- Unloaded start
- On steel base frame
- Pressure gauges
- Control panel
- Capacity control
- Pressure safety switches
- Oil separator

Pieces: 2

Evaporating Condenser:

Brand: Baltimore
Type: VXC 185R
Refrigerant: NH3/Ammonia
Capacity: 720 kW
Pieces: 1

Including:

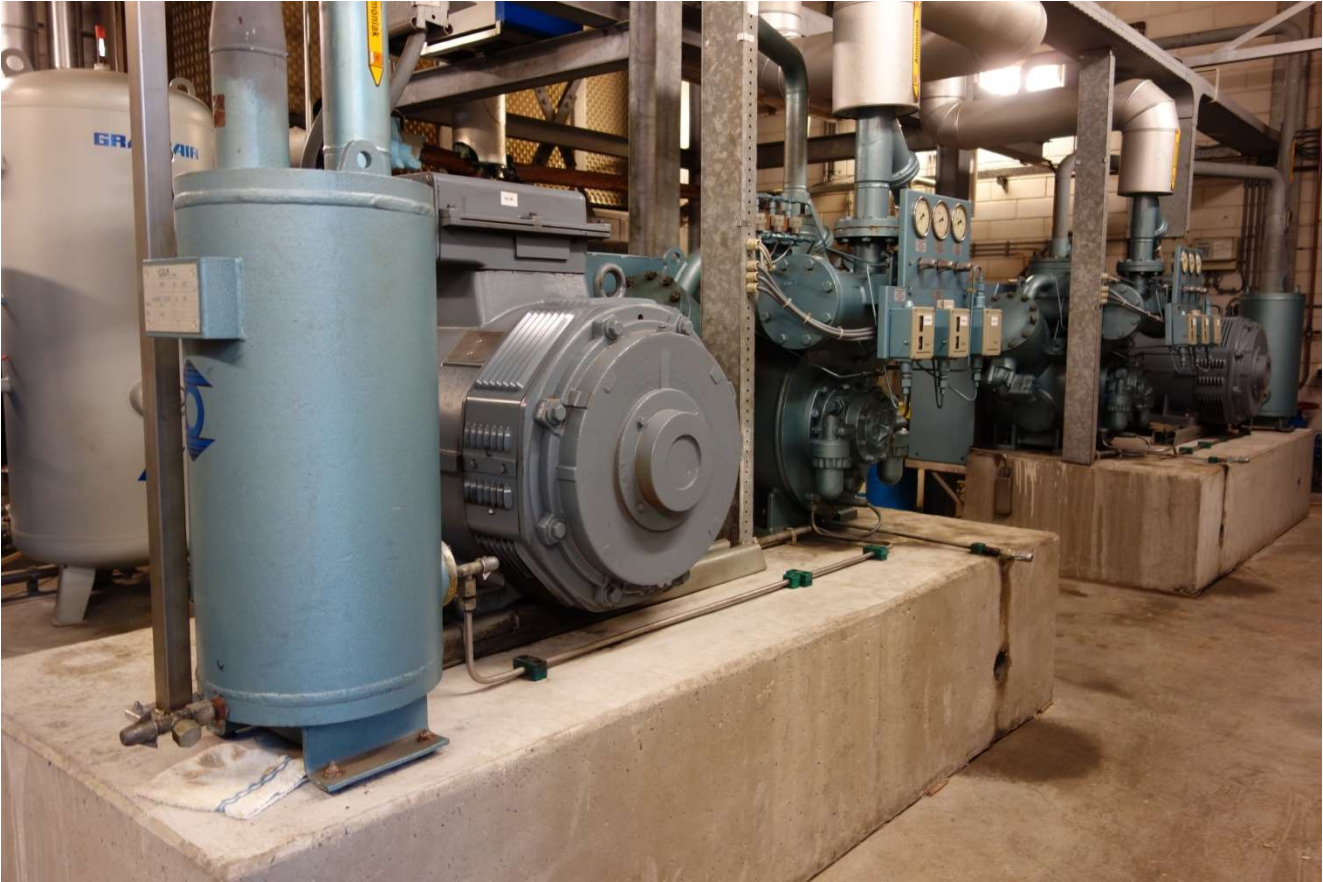
- Original Control panel
- Original Separator
- Original Water Pumps

Excluding:

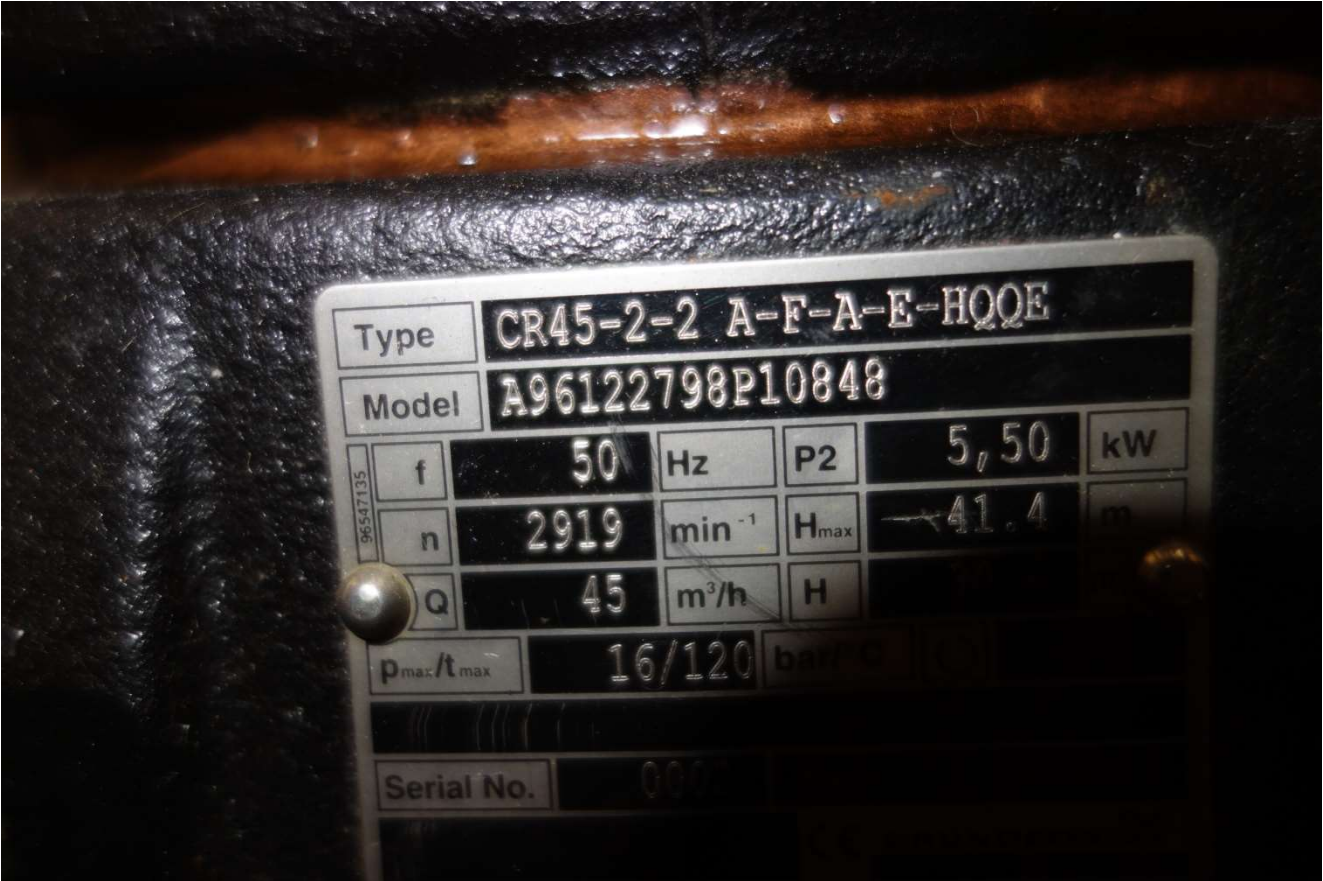
- Water tank (beneath falling film on photos on site)













Kontrolekaart nummer: 6805-41280/105
Kruisnummer: 903 Volg. 321 95

40W100 40W110 1842-5

veerelghend-afgeleid-op-10bar

1842-5 1842-5

1842-5 1842-5 1842-5 1842-5

1842-5 1842-5 1842-5 1842-5

1842-5 1842-5 1842-5 1842-5

1842-5 1842-5 1842-5 1842-5

GEA GEA GEA
Grenco B.V. Grenco B.V. Grenco B.V.
In-stallatie gevuld met stikstof (N₂)
GEA GEA GEA
Grenco B.V. Grenco B.V. Grenco B.V.

HOOFDSCHAKELAAR
OFF
IEC 6073

